



Emergency Contraception: New Methods

Alison Edelman, MD, MPH

Professor, OB/GYN

Director, Division of Complex Family Planning (CFP) & Fellowship in CFP

Funding: NICHD R01HD089957, PI Edelman

FIAPAC September 2022





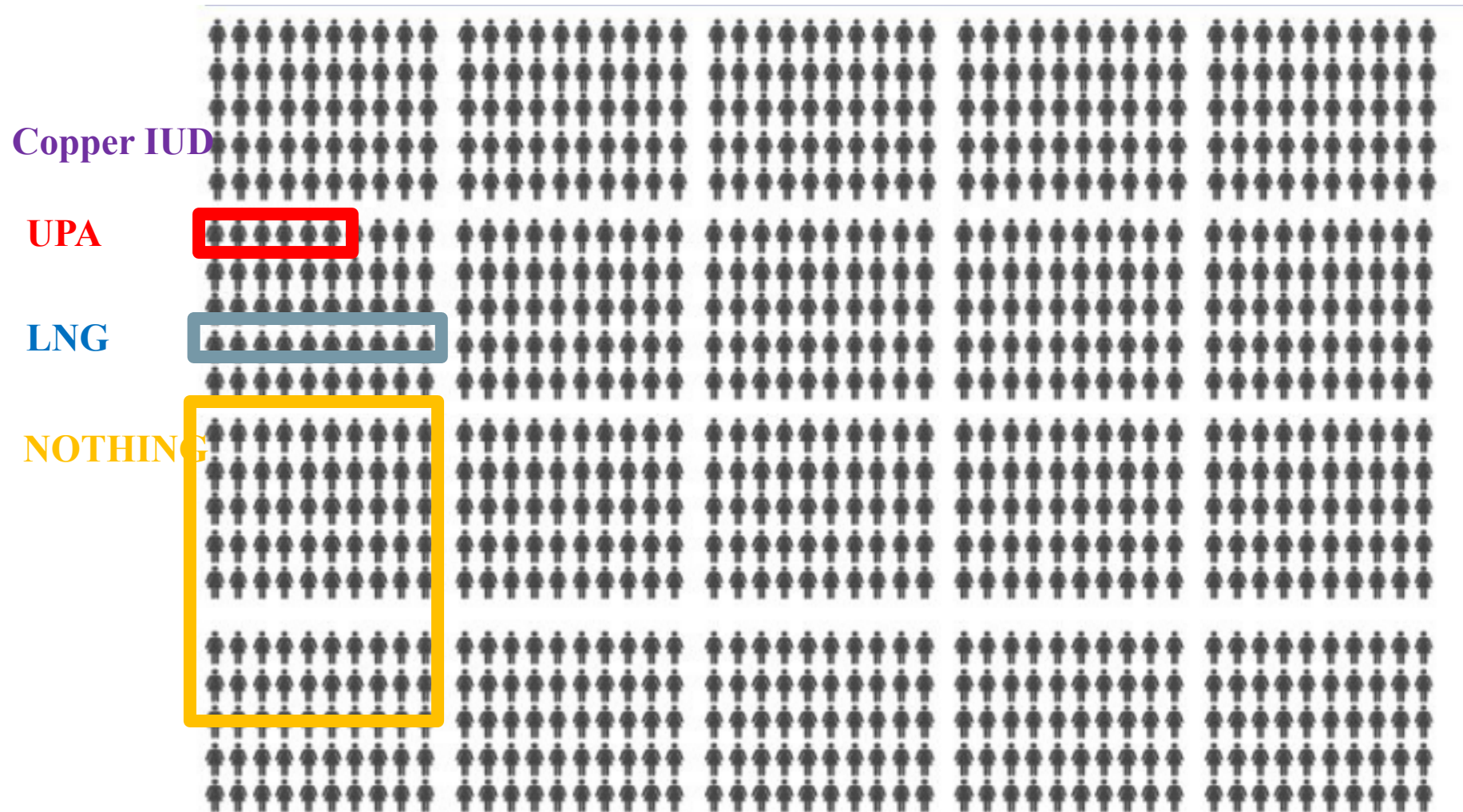
Fertility facts

- Fertile period of time in a cycle is ~6 days
- Sperm is viable in the reproductive tract for ~5 days
- An egg is capable of fertilization for 12-24 hours
- Implantation occurs 6-10 days after fertilization
- Pregnancy risk after a single act of intercourse around the most fertile time is estimated to be up to 30%

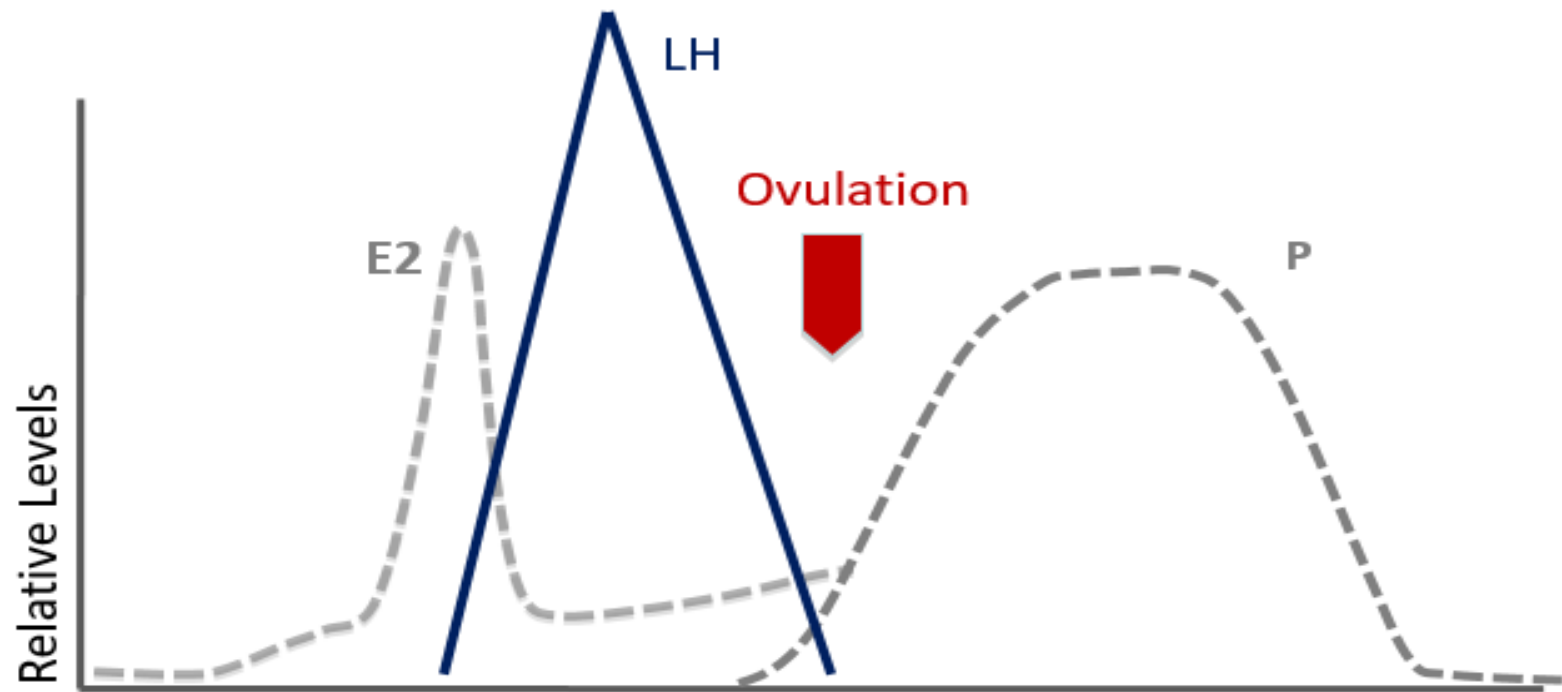
Evidence-based EC basics

- Copper IUD is the most effective method of EC
- UPA EC demonstrated more effective than LNG EC
- Oral EC & Timing
 - UPA EC effective up to 120 hours after unprotected sex
 - LNG EC effective up to 72 hours after unprotected sex
 - Some evidence that after 96 hours it is ineffective
 - Oral EC, LNG or UPA, given after ovulation is ineffective
- Other impacts on effectiveness
 - Hormonal contraception interferes with UPA EC
 - Higher BMI/weight impacts LNG EC

Pregnancies per 1000 Women after Unprotected Intercourse



Mechanism of action

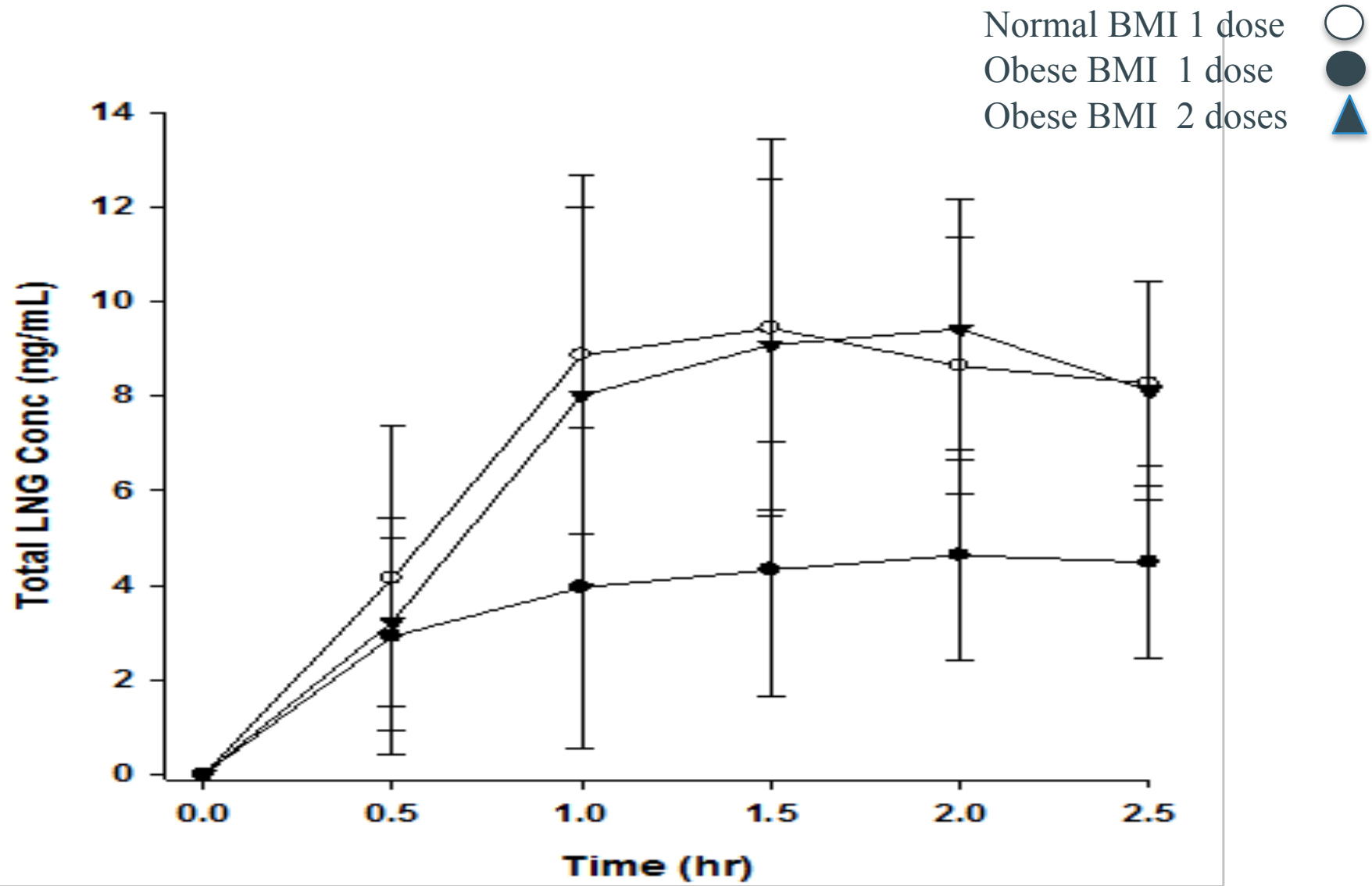


Pre-LH surge	LH rise	Post-LH surge
<ul style="list-style-type: none">•LNG•UPA	<ul style="list-style-type: none">•UPA	



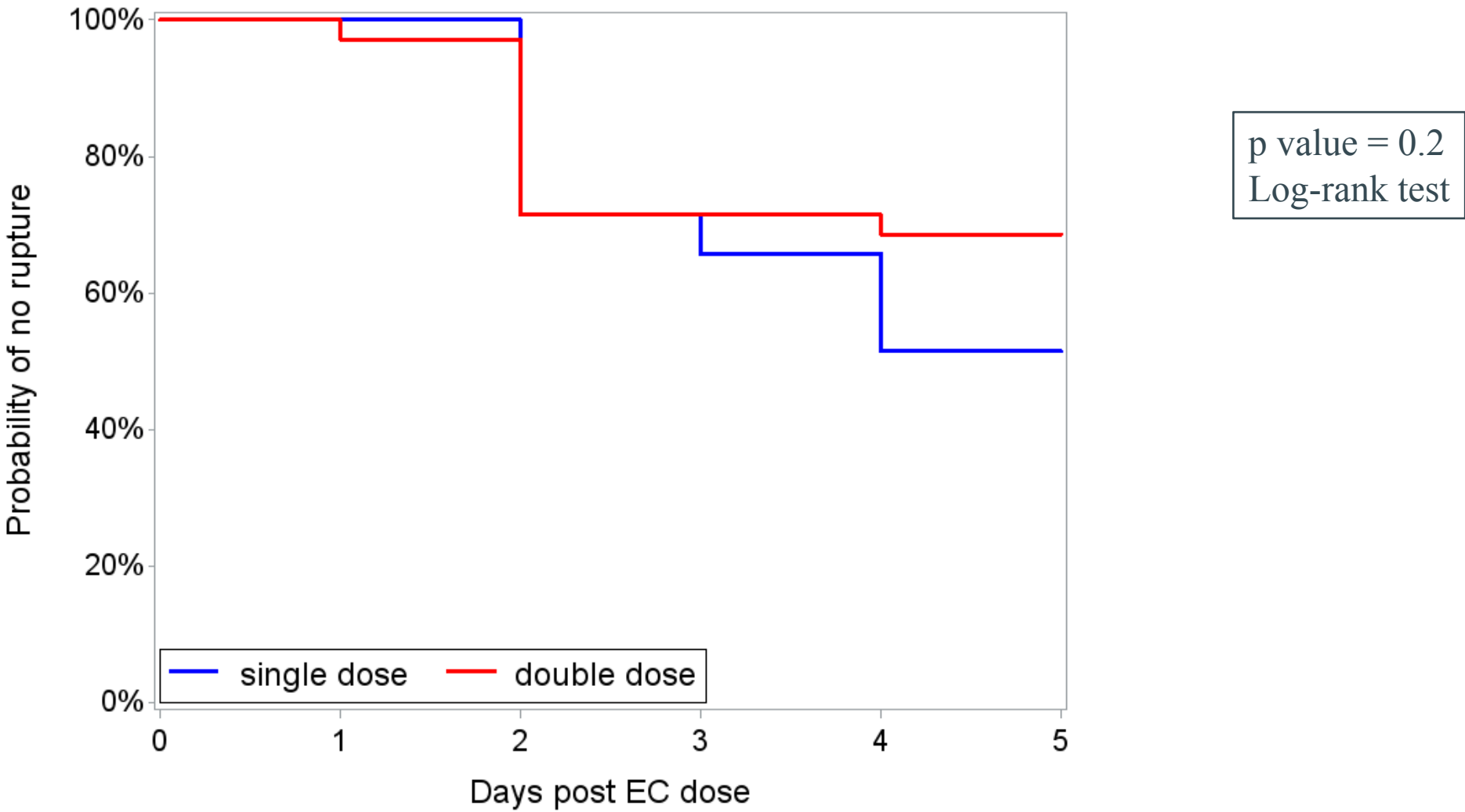
Pharmacokinetics of LNG-EC

Single & Double Dosing



Randomized Control Trial of 1.5mg vs 3mg LNG EC

Time to rupture



Per Protocol Analysis. Censored at day 5
75% probability of no rupture is day 2 for both groups

Single vs Double Dosing LNG EC

- LNG EC dose escalation had no demonstrated impact on delay or timing of rupture for individuals with obesity.

Strengths

- Randomized design
- Objective outcome
- Directly observed ingestion

Limitations

- Pre-screen ovulatory status by progesterone only
- Luteal phase normalcy not assessed
- Power analysis to determine 30% difference

LNG-IUD for EC?

- **Prospective cohort study (2016)**

- Those seeking EC could choose

- Cu-IUD (n=67) v. LNG EC plus 52mg LNG-IUD (n=121)
 - 1 pregnancy LNG group

- **Randomized controlled study (2021)**

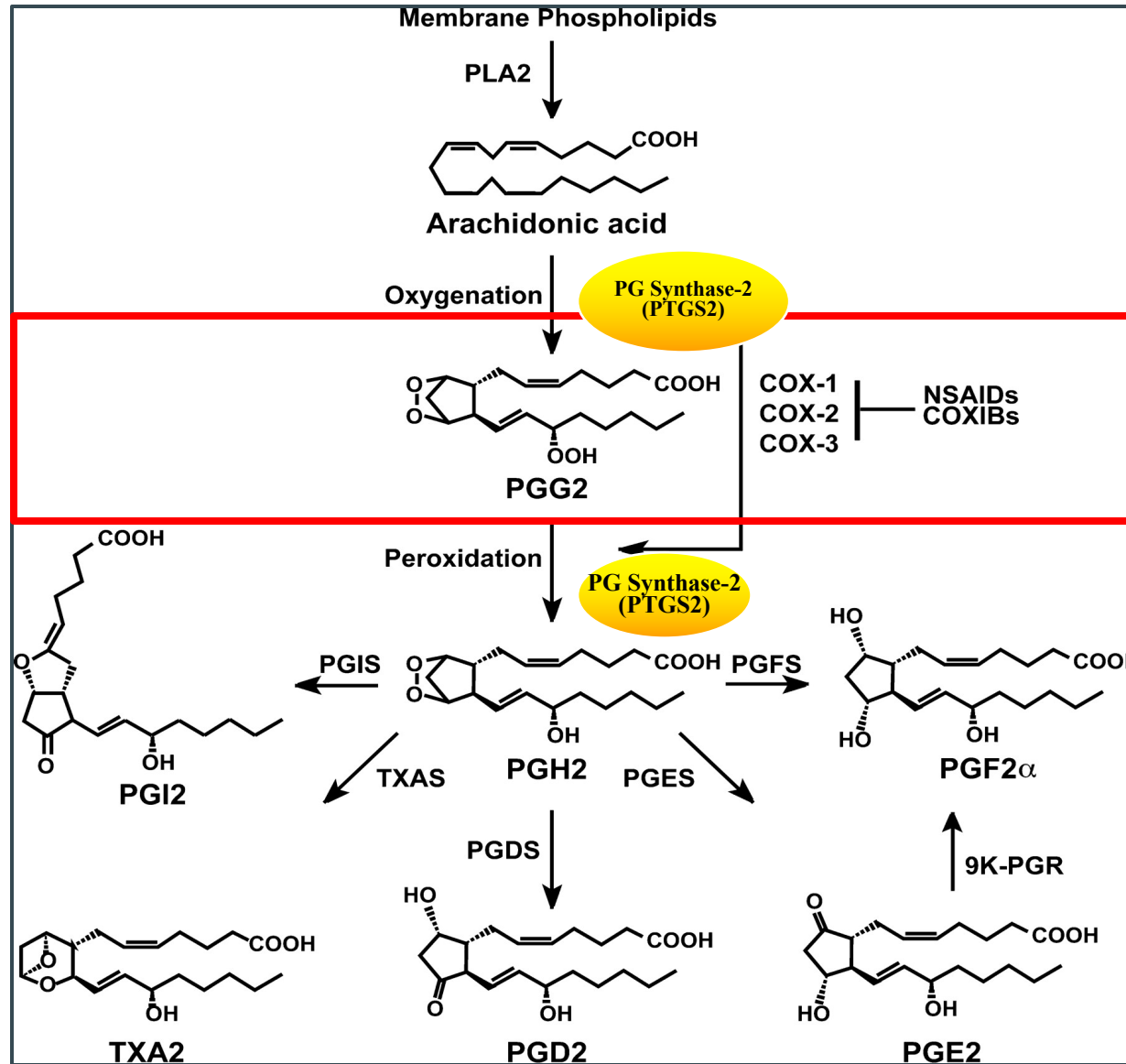
- Those seeking EC randomized
- Cu-IUD (n=327) v. 52mg LNG-IUD (n=317)
 - 1 pregnancy LNG group
- Noninferiority methodology
- Mid-cycle at risk unknown
- Unbalanced study groups
 - More contraceptive use prior to LNG IUD arm

Quick start? YES
EC? Too early to know

Prostaglandins & Fertility

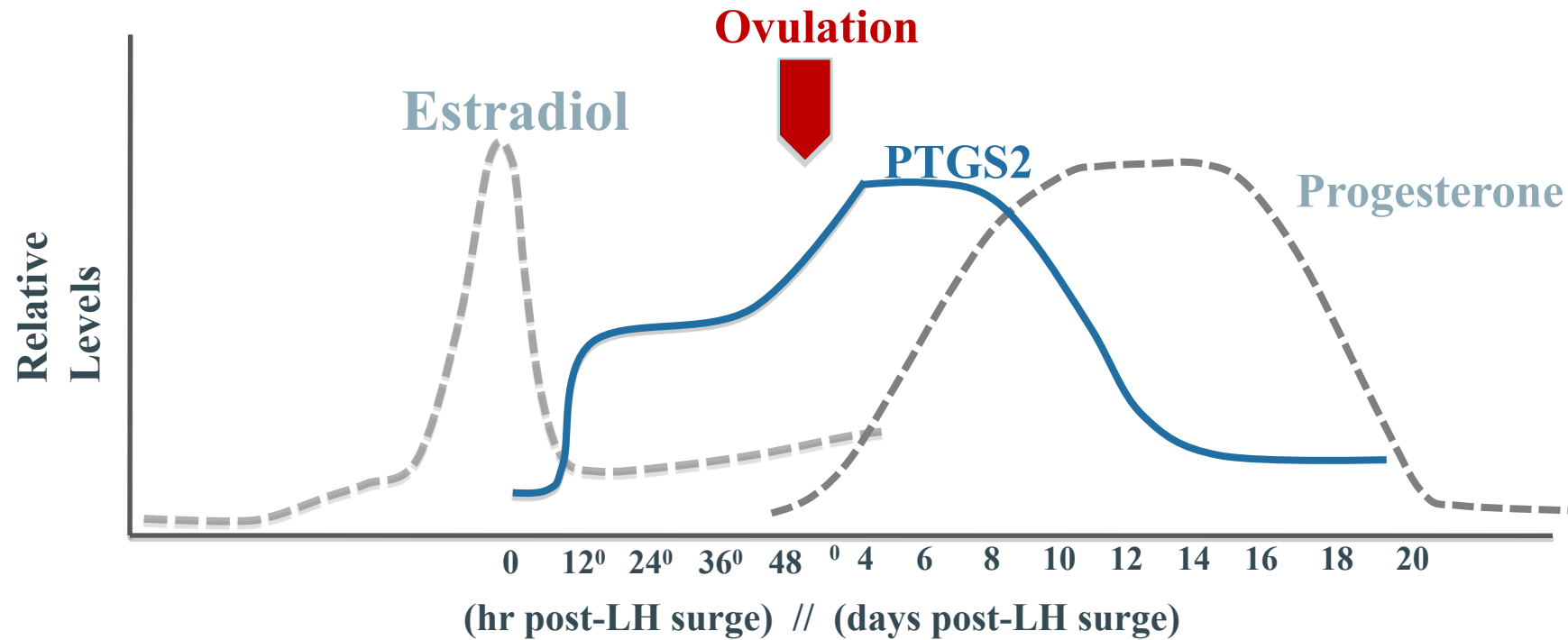
- Follicle rupture
- Cumulus expansion
- Oocyte maturation
- Luteal function
- Fertilization

Prostaglandin Pathway



Prostaglandins: Post-LH peak effects

PTGS2 is a precursor of PGE2



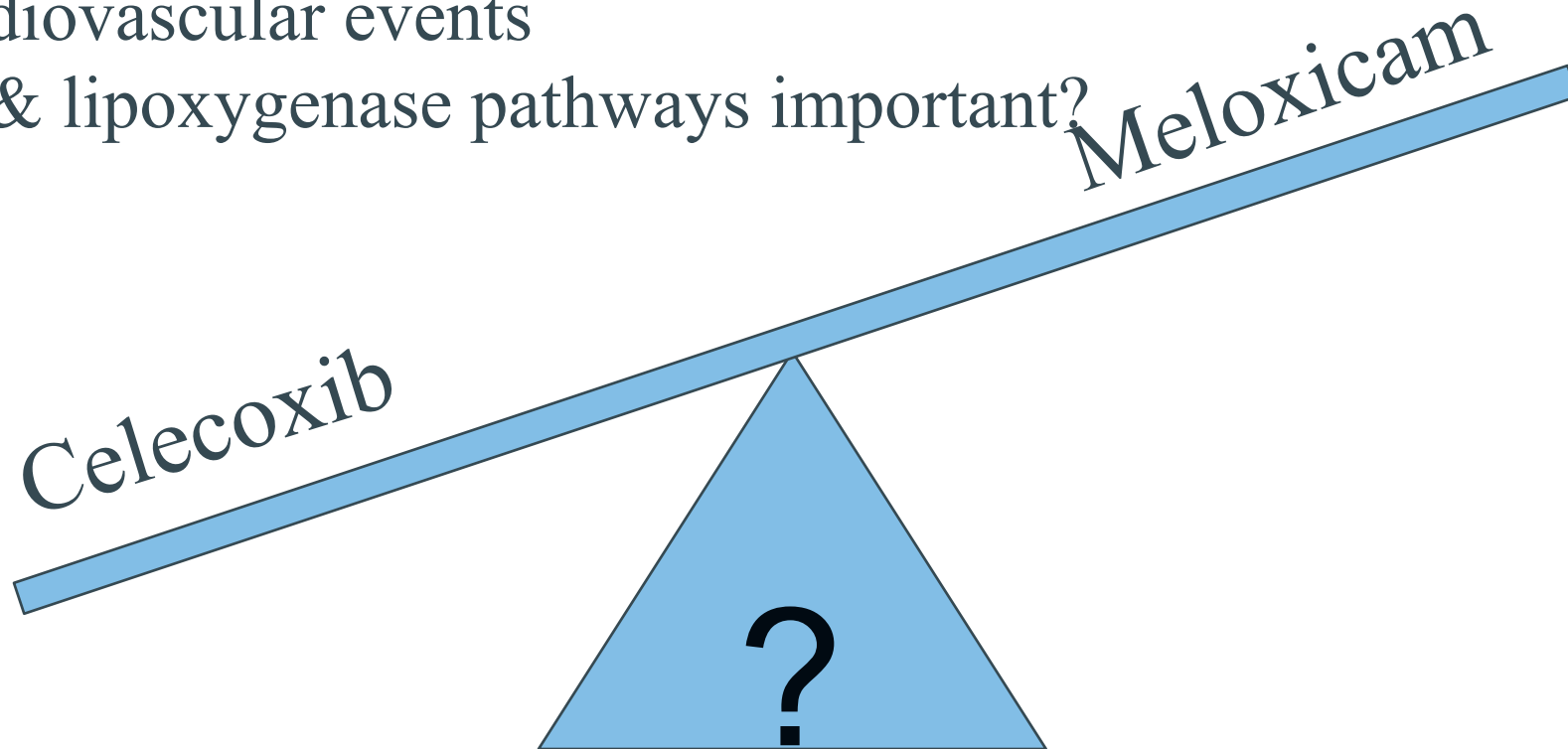
Cox 2 Inhibitors: Meloxicam v Celecoxib

Celecoxib more COX-2 specific (7 fold more specific to PTGS2 than Meloxicam)

- Less GI effects

- More cardiovascular events

Are COX-1 & lipoxygenase pathways important?



Meloxicam: Ovulatory dysfunction

HUMAN	Meloxicam 15 mg/day	Meloxicam 30mg/day
Ovulation	11/22 (50%)*	2/22 (9%)
Dysfunctional ovulation	6/22 (27%)	10/22 (45.5%)*
Unruptured follicles	5/22 (23%)	10/22 (45.5%)

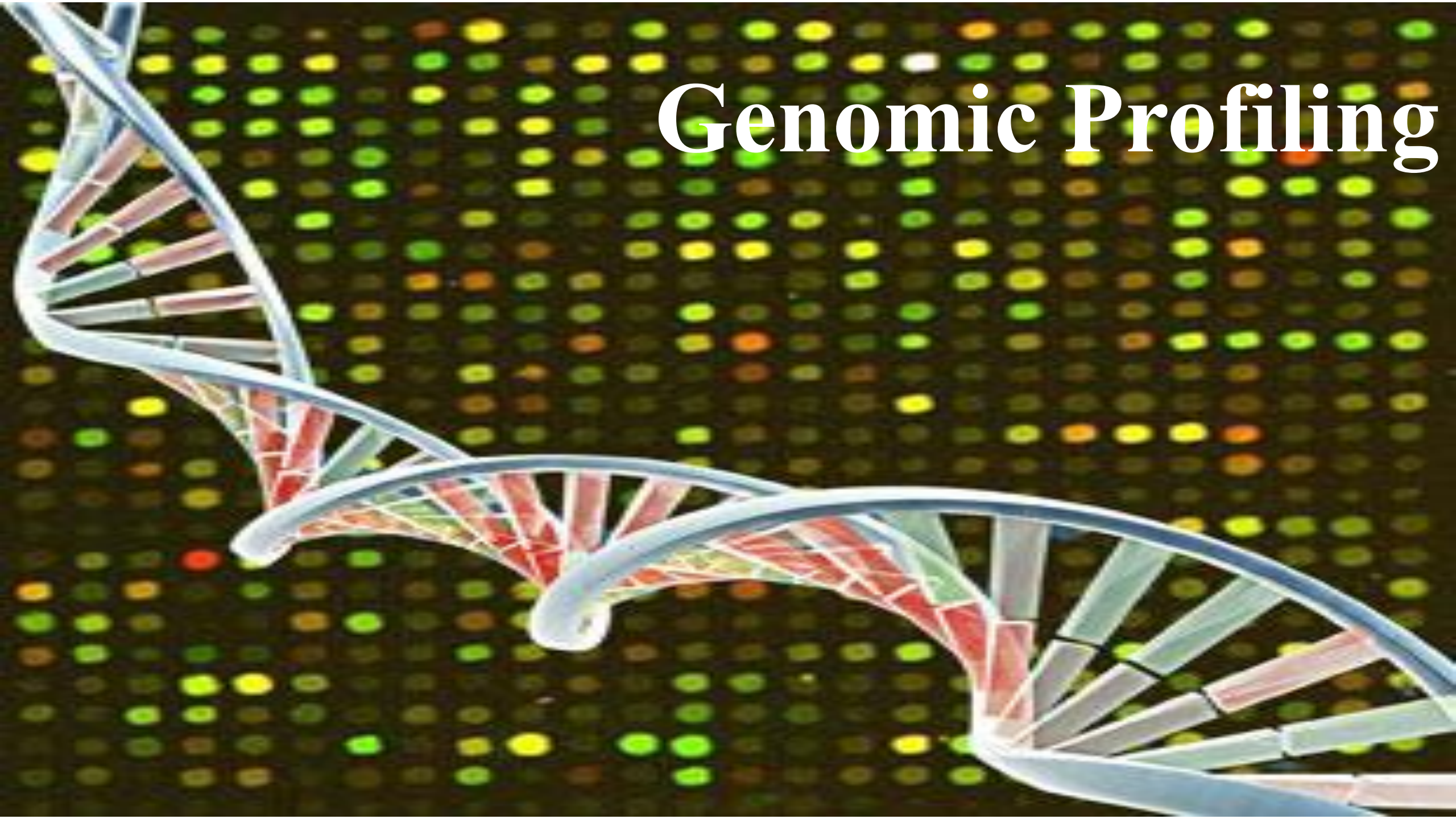
Celecoxib: Ovulatory dysfunction

Cycle type	Normal	Ovulatory dysfunction	Unruptured	Both
Control	19 (95%)	1 (5%)	0 (0%)	5%
Before LH surge	14 (70%)	2 (10%)	4 (20%)	30%
After LH surge	16 (80%)	3 (15%)	2 (10%)	25%

Combination EC: Cox 2 plus oral EC

- Meloxicam 15mg plus LNG EC 1.5mg
 - No rupture or follicle dysfunction 66% LNG only vs 88% combo
 - Sample size: 41 paired cycles
- Meloxicam 30mg plus UPA EC 30 mg (single arm study)
 - Only 2 individuals dosed post-LH surge; only 1 ovulated
 - Sample size: 9 participants

Genomic Profiling



Evolution of EC

- Non-use of contraception drives unplanned pregnancy rates
- Unmet need for an on demand/peri-coital method
- Method characteristics differ from EC
 - Impact on cycle cyclicity
 - Side effects



OHSU, Portland, Oregon

Jeff Jensen, MD, MPH

Jeong Lim, PhD

Kise Bond

Women's Health Research Unit

OHSU/ONPRC

Jon Hennebold, PhD

EVMS, Norfolk, VA

David Archer, MD

Consultants

Vivian Brache, Profamilia, DR

Ganesh Cherala PharmD, PhD

Funding

NIH R01 HD089957 (PI Edelman)

NIH P51OD011092 (Endocrine Tech Core Lab)

NIH UL1TR002369 (OCTRI/REDCap)